



COMPANY PROFILE

www.shamrock-investment.com

WE ARE **Shamrock** Investment



CONTENTS

- 01 | **OVERVIEW**
- 02 | **ORGANISATION
STRUCTURE**
- 03 | **OUR SERVICES**
- 04 | **QUALITY PLAN**
- 05 | **PREVIOUS WORKS**
- 06 | **HEALTH &
SAFETY PLAN**
- 07 | **PLANT SCHEDULE
& EQUIPMENT**
- 08 | **CORPORATE SOCIAL
RESPONSIBILITIES**
- 09 | **CONTACT
INFORMATION**

COMPANY OVERVIEW

**SHAMROCK
INVESTMENT CC is
professionally structured to
cater for the high demands
of both the Building, Earth
Moving, Equipment Supply &
Civil/Marine Construction.**

We are a 100% own Namibian company. The idea of establishing this organization is encouraged by the government policies to create job opportunities for the marginalized Namibian, youth and women in particular.

We are equipped with a team of fully qualified, competent technical personnel that are reared to provide a quality service, in time and cost effectively.

The world is changing all around us. To continue to thrive as a business over the next ten years and beyond, we must look ahead, understand the trends and forces that will shape our business in the future and move swiftly to prepare for what's to come. We must get ready for tomorrow today.



Objective

To be one of Namibia's greatest service providers in the field we serve by being dedicated to bringing growth to our immediate communities. That's what our 2030 Vision is all about. It creates a long-term destination for our business and provides us with a "Roadmap" for winning together with our partners.



Purpose

To be a leader in the Building, Earth Moving, Equipment Supply, Civil/ Marine construction & Oil Spill response industry by providing services, relationship & profitability.



Mission

To maintain remarkable quality of service in delivering advanced and rigorous professional, technical, and operational solutions to the industry



Vision

To be a leading solutions provider in the industry.



Philosophy

Do it right at the first time. Minimisation of loses to clients and our shareholders through safe work practices.



Values

ENTREPRENEURSHIP

Encouraging creativity and innovation, analytically managing risks, promoting teamwork and unbureaucratic business practices.

SERVICE EXCELLENCE

To serve our customers proficiently, courteously and efficiently in all areas of our work.

PASSION

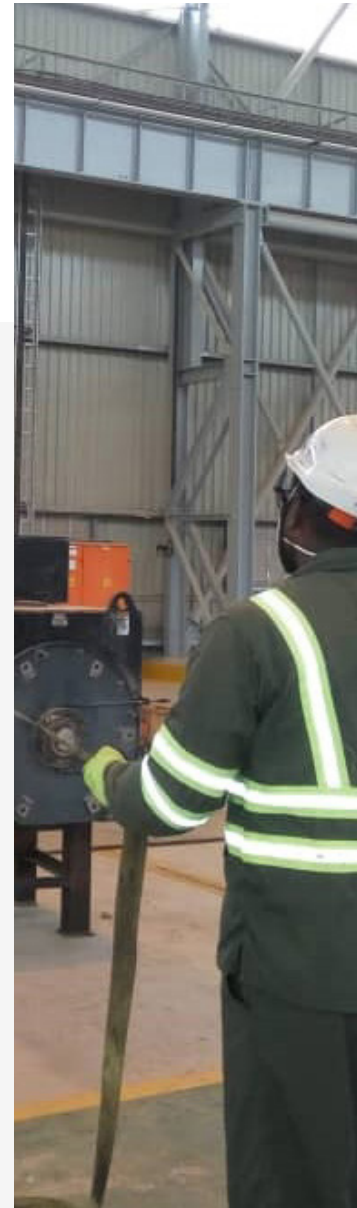
Passion is at the heart of our company. We are continuously moving forward, innovating, and improving.

INTEGRITY

We are honest, open, ethical, and fair. People trust us to adhere to our word.

DIVERSITY

We know it takes people with different ideas, strengths, interests, and cultural backgrounds to make our company succeed. We encourage healthy debate and differences of opinion.



OUR STRENGTHS



Proven ability to penetrate new Markets



The Group's size enables it to compete for the biggest projects in the Namibia.



+11 highly qualified professionals

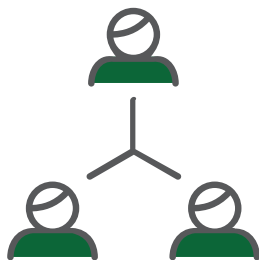
+54%



COMPANY HIGHLIGHTS

CORPORATE STRATEGY

Invest in a market-driven portfolio of advantaged and technology-enabled businesses that create value for our shareholders and customers.

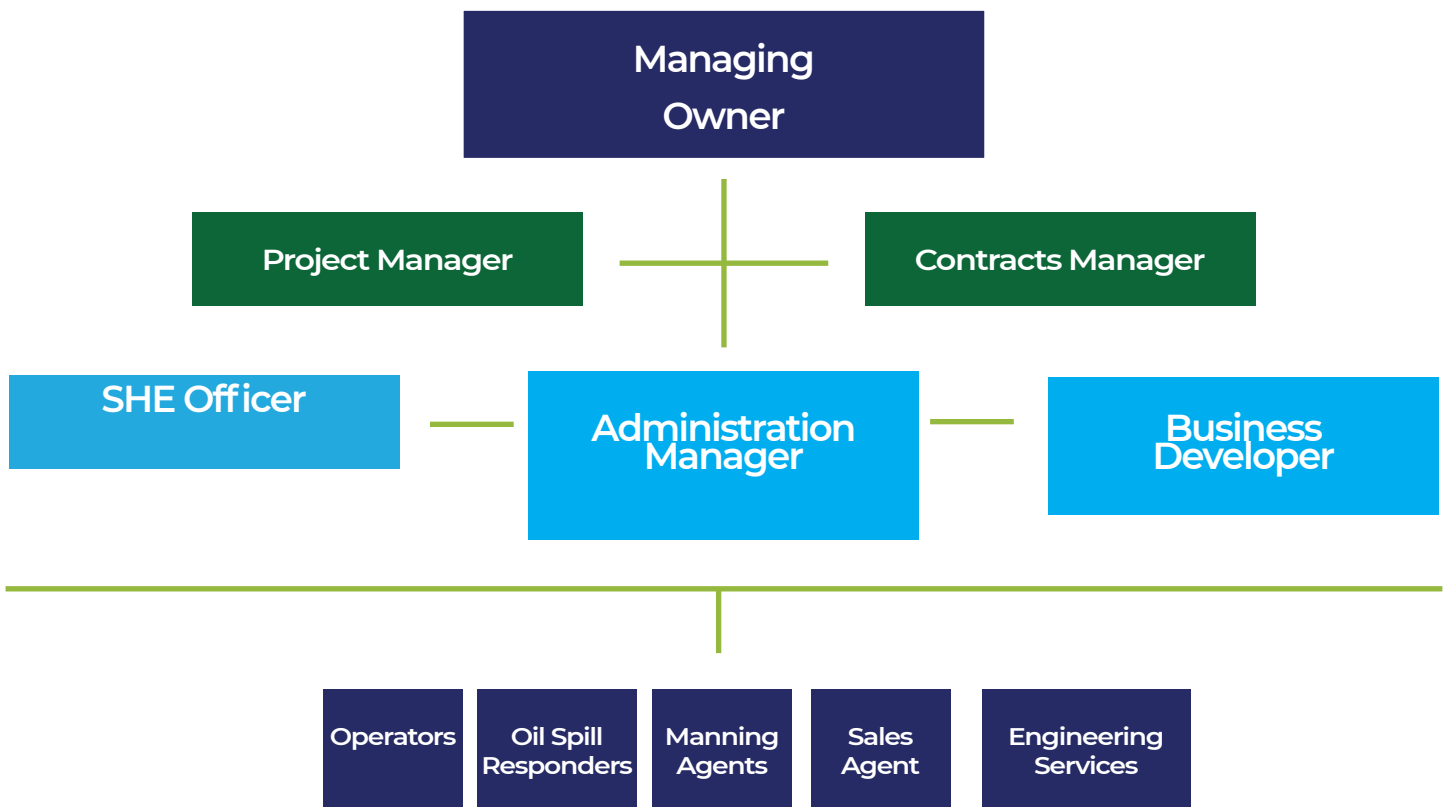


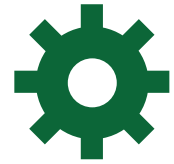
Significant geographical diversification, well distributed across different regions at different stages of development.

We believe it is our team who have created our successful Design practice through their passion, ambition and confidence.



ORGANISATION STRUCTURE





OUR SERVICES

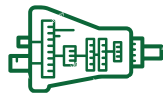


SHAMROCK INVESTMENT CC aim is to design and deploy Construction solutions, Earth moving & Equipment Supply that become contributions to the economic and social improvement of nations and to generate maximum value from the resources available in a given place.

We leverage technological and organisational innovation and harnesses the power of its extraordinary human and professional resources.



SPECIALIZED OFFSHORE SERVICES



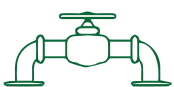
EARTH MOVING & EQUIPMENT SUPPLY



SPECIALIZED OFFSHORE SERVICES



ELECTRICAL & BUILDING MAINTENANCE



CONSTRUCTION SOLUTIONS



MARITIME CONSULTING & OIL SPILL RESPONSE

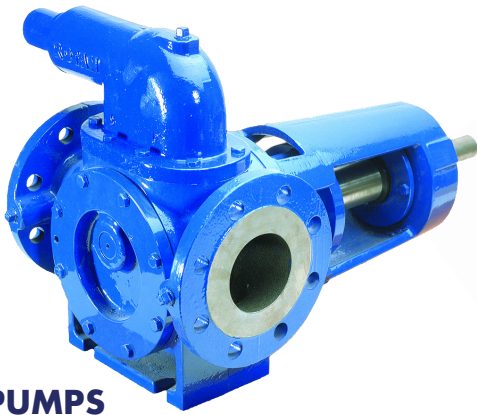


MAINTENANCE REPAIR

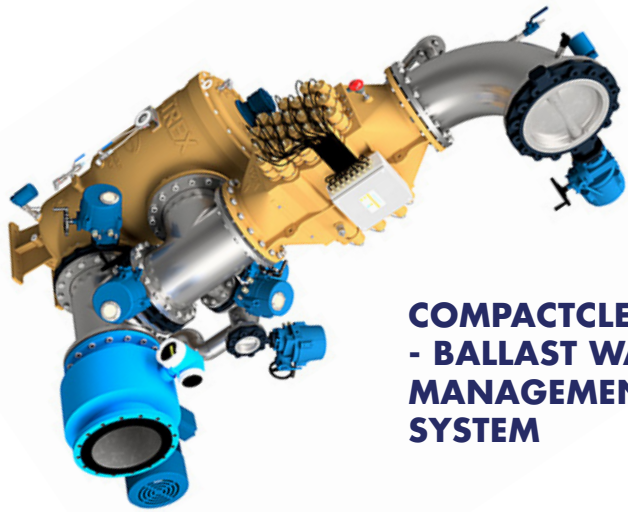


GENERAL PLUMBING

SUPPLY OF GOODS



PUMPS AND VALVES



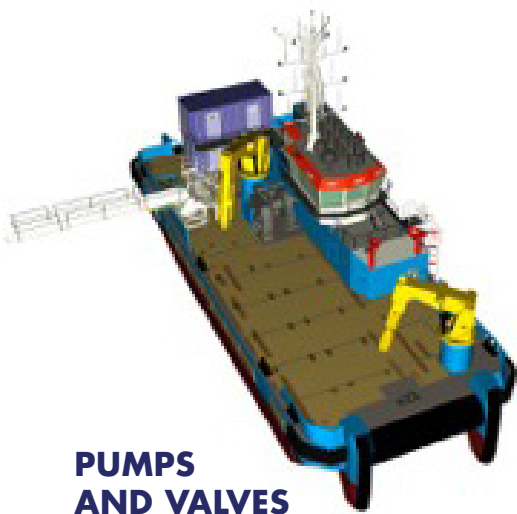
COMPACTCLEAN - BALLAST WATER MANAGEMENT SYSTEM



DUST SUPPRESSANT (CLAYCRETE)



MOBILE FIRE & EMERGENCY PUMPS



PUMPS AND VALVES



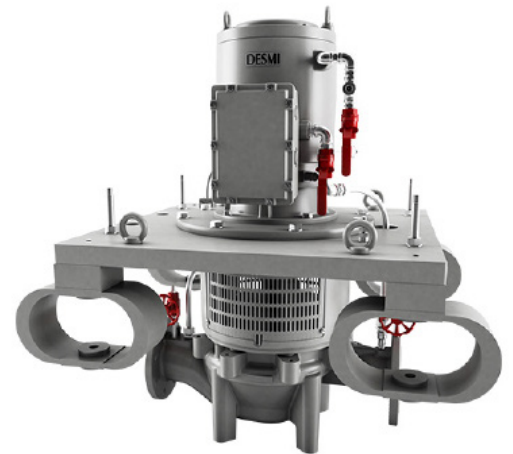
SPILL ABSORBENT MATERIALS



ROVS FLEET & SURVEY EQUIPT



OPTISAVE™ - ENERGY SAVING SYSTEM



SHOCK RATED PUMPS

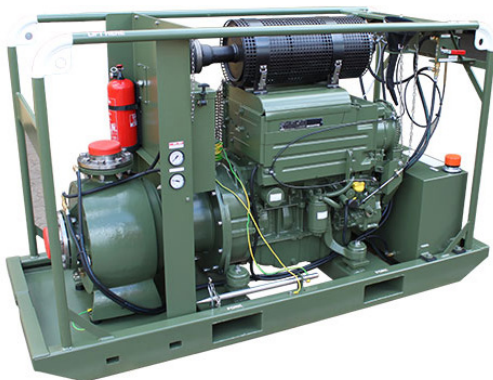


**HIMOINSA
GENERATOR**

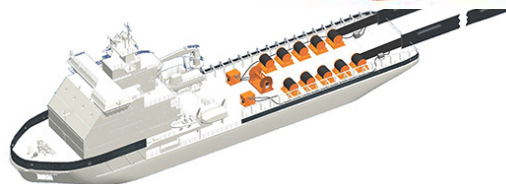


**PROTECTIVE
CLOTHING**

BOOM REELS



**FUEL
TRANSFER
SYSTEM**



SPEED WHEEL

OIL SPILL SERVICES & EQUIPMENT SUPPLY

Our stockpile of oil spill response equipment includes oil spill dispersant and containment, recovery, cleaning, absorbent and communications equipment.

Together with our two world leading International Oil Spill Equipment Manufacturers partners VIKOMA and DESMI we offer various oil spill solutions and supply a range of equipment such as Oil Skimmers, Containment Booms, Spill Kits, Absorbents, Ancillary Equipment, work boats, pumps.

Services Areas

- Marine & Offshore
- EnviRo-Clean
- Utility
- Industry
- Defence & Fuel

Partners

VIKOMA
DESMI



OFFSHORE SUPPORT SERVICES

**Offshore
Logistics Supply:
Multipurpose vessel**

Maritime and Shipping
Consultancy



Together with our partner
www.jifmar.net
we offer various Offshore

**Support Services
in and around
Namibia.**

Mooring pattern:

- Deep-lines and Auto-hydro
- Bathymetry and sonar
- 3D modelling
- UXO survey

**Soil composition survey:
acoustic coring CPT
Vibrocorer**

**1. Engineering
and Site Inspection**

2. Operations

Pre ops - site inspection | Loading
Master | Mooring Master | Tanker
mooring and unmooring | Tanker
loading and unloading

3. Maintenance Work

Umbilical replacement | Subsea
export hose | Change subsea export
horse | Clap installation | Anchor
installation | Chain replacement

OFFSHORE LOGISTICS SUPPLY:

MULTIPURPOSE VESSEL

1. Engineering and Site Inspection

Marine engineering | Deck layout | Mooring studies
Stabilities studies | Operation procedures

2. Operations

Free span | Grouting jobs | Acid jobs | Anchor Handling Tug
Diving operations | ROV | Mattress installations | Cargo
operation | Tanker lifting operations | Towing operations
Cable laying management | Maritime and Shipping
Consultancy | Preparing of Oil Spill Contingency plan
SOPEP Plan | Garbage Management Plan | Vessel Safety
Training Manual | Maritime Training and GMDSS Examiner

TIPPER TRUCK SERVICES

Tipper Services focuses on providing solutions for customers using innovation and a wealth of practical experience.

We have a 'can do' attitude and continually rise to the challenges we meet.



CONSTRUCTION

We offer a full range of construction and contracting services, from civil and building construction, roads and earthworks and property development.



PLANT SCHEDULE & EQUIPMENT

SCHEDULE OF PLANT & EQUIPMENT FOR THE PROJECT

Note: The Plant & Equipment listed above is wholly owned by Homefin Properties cc



Tipper Trucks



Front End Loaders



Forklift



Bull Dozer

PLANT HIRE & EQUIPMENT

Plant is sourced out on an on-going hire basis from reputable suppliers.



PLANT HIRE

Small Plant
& Equipment



Large &
Mobile Plant



HEALTHY & SAFETY PLAN

SAFETY, HEALTH & ENVIRONMENT



Objectives

Shamrock Investment cc's main objective of Safety, Health and Environment policy is to provide practical guidance to the employees and the client at the work place with view to:

1. Preventing accidents and diseases and harmful effects on the health of workers arising from construction sites,
2. Providing means of analyzing from the point of view of safety, healthy and working conditions, construction processes, activities, technologies and operations, and of taking appropriate measures of planning, control and enforcement at working place.

General Duties of Shamrock Investment at work place in view of SHE

- ② Shamrock Investment will provide adequate means and organization and will establish a suitable programme on safety and health of workers consistent with national laws and regulations and will comply with the prescribed safety and health measures at the workplace.

② Shamrock Investment will provide and maintain workplaces, plant, equipment, tools and machinery and organize construction work that as far as is reasonably practicable there is no risk of accident or injury to health of workers. In particular, construction work will be so planned, prepared and undertaken that:

- ① Dangers liable to arise at the work place are prevented as soon as possible,
- ① Excessively or unnecessarily strenuous work positions and movements are avoided,
- ① Organization of work takes into account the safety and health of workers,
- ① Materials and products are used which are suitable from a safety and healthy point of view,
- ① Working methods are employed which protect workers against the harmful effects of chemical, physical and biological agents.

Covid-19 Statement

We understand that these Covid-19 industry demands highest level of hygiene standards. At Shamrock, we realise that it is an important aim of yours to look after the health of your customers.

It is our No.1 priority to provide you with all the cleaning services that help you in delivering this experience to your customers in order to stand out above the competition.

We offer 24/7 support and your dedicated client manager will always be on hand to assist you in any way you can We work tirelessly behind the scenes to ensure that you are provided with a exceptionally well managed service.



PREVIOUS WORKS

Client	Type of Work Performed	Year & Status	Contract Value
Marine consultancy	Service provided to various fishing company (Tunacor, Merlus, Abroma, Gendev, Seaflower etc.)	2017 - 2021	N\$ 800 000.00
Maritime Agency	Jifmar Offshore Services	2018 - 2020	N\$ 800 000.00
Walvis bay Municipality	Earth Moving Services	2019 -	N\$ 1 800 000.00
Walvis bay Municipality	Various construction projects	2020	N\$ 390 000.00
Walvis bay Municipality	Supply, Delivery and Installation of Genset	2021	N\$ 472 000.00
Walvis bay Municipality	Road construction	2021	N\$ 450 000.00
Namibian Fish Consumption Promotional Trust (NFCPT)	Renovation of Tobias Hanyeko Fish Shop	2021	N\$ 300 000.00
Namport	Supply and Delivery of Oil Skimmer and Powerpack	2019	N\$ 1 900 000.00
Namport	Supply and Delivery of Oil Skimmer and Powerpack	2020	N\$ 2 300 000.00
Namport	Supply and Delivery of IALA Channel Bouys	2021	N\$ 1 200 000.00
Fisheries Observer Agency	Supply of PPE	2020	N\$ 270 000.00
Namport	Supply of EasyBoxes and Temper Evident Seals	2020 -	N\$ 4 800 000.00
Namcor	Development of Oil Spill Contingency Plan	2021	N\$ 470 000.00
Debmarine Namibia	Supply of Oil Spill Equipment	2022	N\$ 13 000 000.00
Namport	Supply of Boom Reel	2022	N\$ 709 534.93
Outapi Town Council	Sewer Services to Ext. 4	2022	N\$ 100 337.39
Walvis Bay Municipality	Plant and Tool Hire	2022	N\$ 1 500 000.00
Afrideca	Earthworks	2022	N\$ 780 000.00
Refuse Solution	Earth works	2022	N\$ 1 300 000.00
Strauss Group	Earthworks	2022	N\$ 100 000.00
Namport	Installation of Interlocks	2022	N\$ 70 669.46
ABIVnBEV Namibia	Transport Services	2022	N\$ 2 000 000
Walvisbay Municipality	Road Emergency Pothole Reseale	2022	N\$ 400 000.00
Namport	Supply EasyBoxes	2019 -	N\$ 5 600 000
Inaguration Investment - Main SME Contractor (Roads Authority)	Labour - Based Constructions (Culvert Bridges) DR4113: Endola to Eemboo	2020	N\$3 200 000
Inaguration Investment - Main SME Contractor (Roads Authority)	Labour - Based Constructions of DR3650 Onakalunda to Epinga	2019	1 200 000
Emirates Trading cc (Road Authority Project)	Labour - Based Constructions (Culvert Bridges) Omutambo Womawe: Road Authority project	2014 - 2016	N\$3 400 000
WECCA Investments (Oshakati Town Council)	Construction of Discharge Valve Chamber and Guardrails at Ehenye Dyke 2B	2022	N\$476 000

10

PORFOLIO GALLERY

MARINE CONSULTANCY

Service provided to various fishing company
(Tunacor, Merlus, Abroma, Gendev, Seaflower etc.)

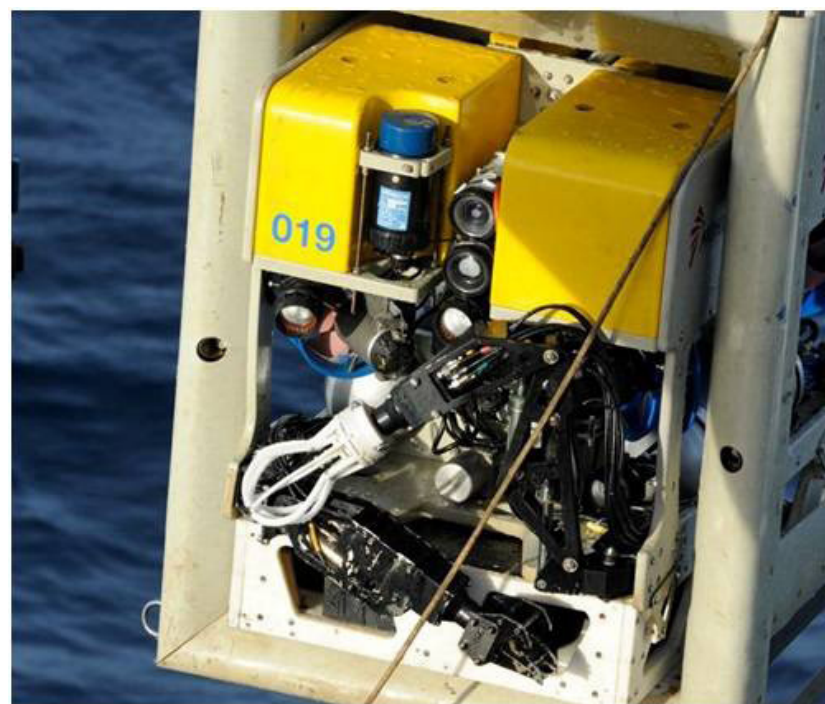
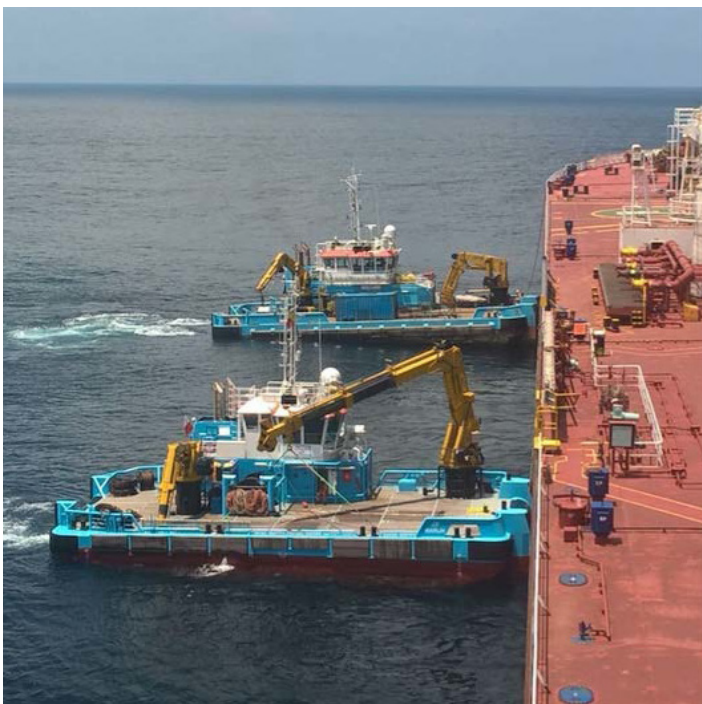
2017 - 2021



MARITIME AGENCY

Jifmar Offshore Services

2018 - 2020



WALVIS BAY MUNICIPALITY

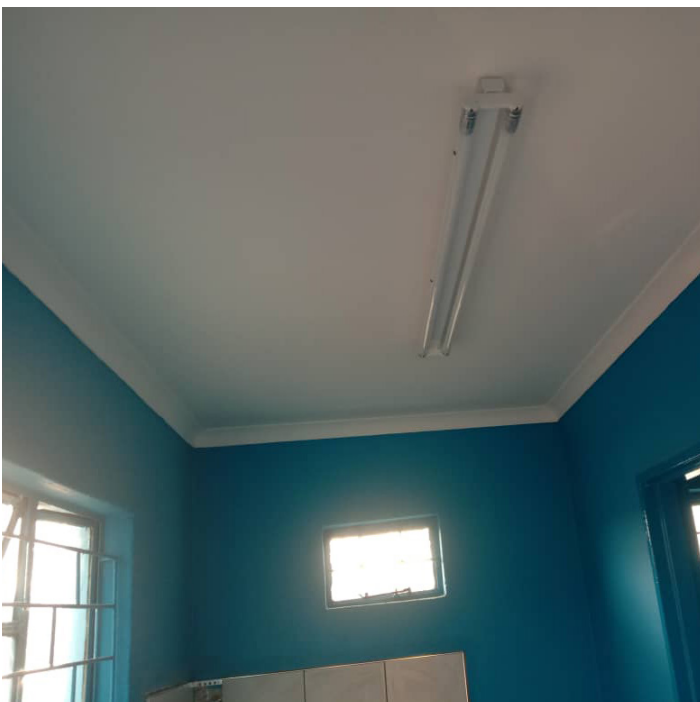
- Earthmoving Services / 2019 - 2022
- Various construction project / 2020
- Supply, Delivery and Installation of Genset / 2021
- Road construction / 2021
- Road construction / 2022





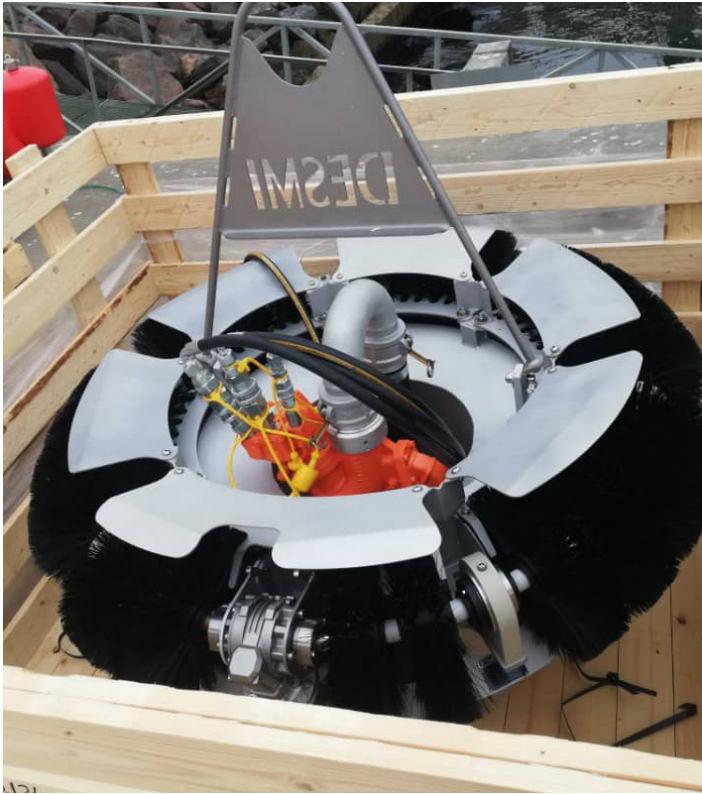
NAMIBIAN FISH CONSUMPTION PROMOTIONAL TRUST (NFCPT)

Renovation of Tobias Hanyeko Fish Shop / 2021



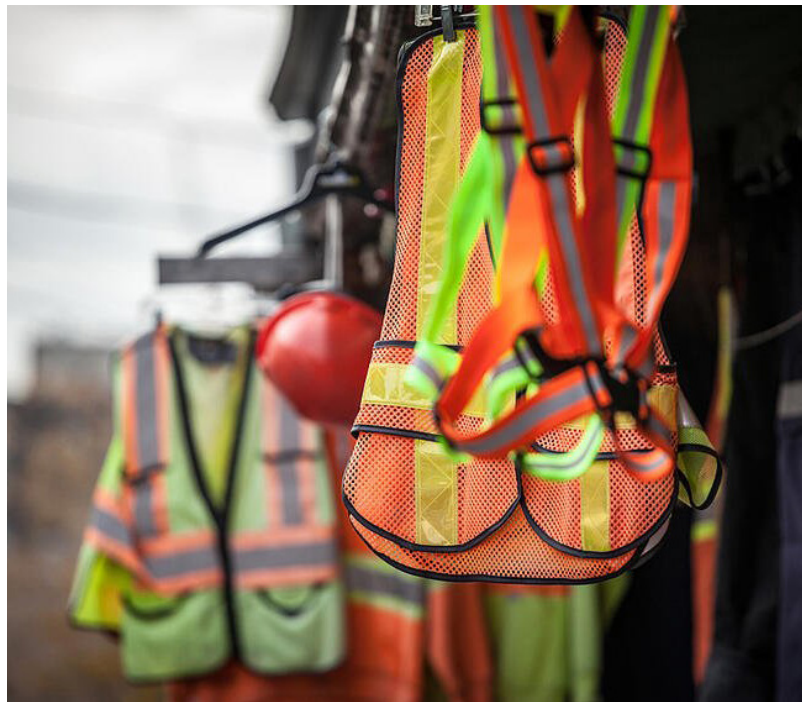
NAMPORT

- Supply and Delivery of Oil Skimmer and Powerpack / 2019
- Supply and Delivery of Oil Skimmer and Powerpack / 2020
- Supply and Delivery of IALA Channel Bouys / 2021



FISHERIES OBSERVER AGENCY

- Supply of PPE /2020



AFRIDECA REFUSE SOLUTION ADM TECHNOLOGY

- Earthworks / 2022



WALVISBAY MUNICIPALITY

Road Emergency Pothole Reseal / 2022



DEBMARINE NAMIBIA

- Supply of Oil Spill Equipment/ 2022





T T CORPORATE SOCIAL RESPONSI- BILITIES (CSR)

We pride ourselves in the investment we make in society, with a view to strengthen opportunities for the youth, while aiding government efforts to uplift destitute communities.

35k
CHARITY 

Assistance to **Epyaliwa Village** is another key investment among our Community. We recently sponsorship a school tournament.

15k
EDUCATION 

Assistance made to the various learners for education purpose is geared toward part-taking in enhancing access to education for our youth.

5k
SPORTS 

Supporting schools in Namibia in materials for examination purpose as well as financial assistance to improving the quality of education.

6k
CHARITY 

Donation to
Johanna Benson Foundation

12 COMPANY INFORMATION

COMPANY NAME **SHAMROCK INVESTMENT CC**

PHYSICAL ADDRESS **Walvis Bay**

POSTAL ADDRESS **P.O Box 4798
Walvis Bay, Namibia**

CELL **+264 81 124 3334 /
+264 81 247 5023**

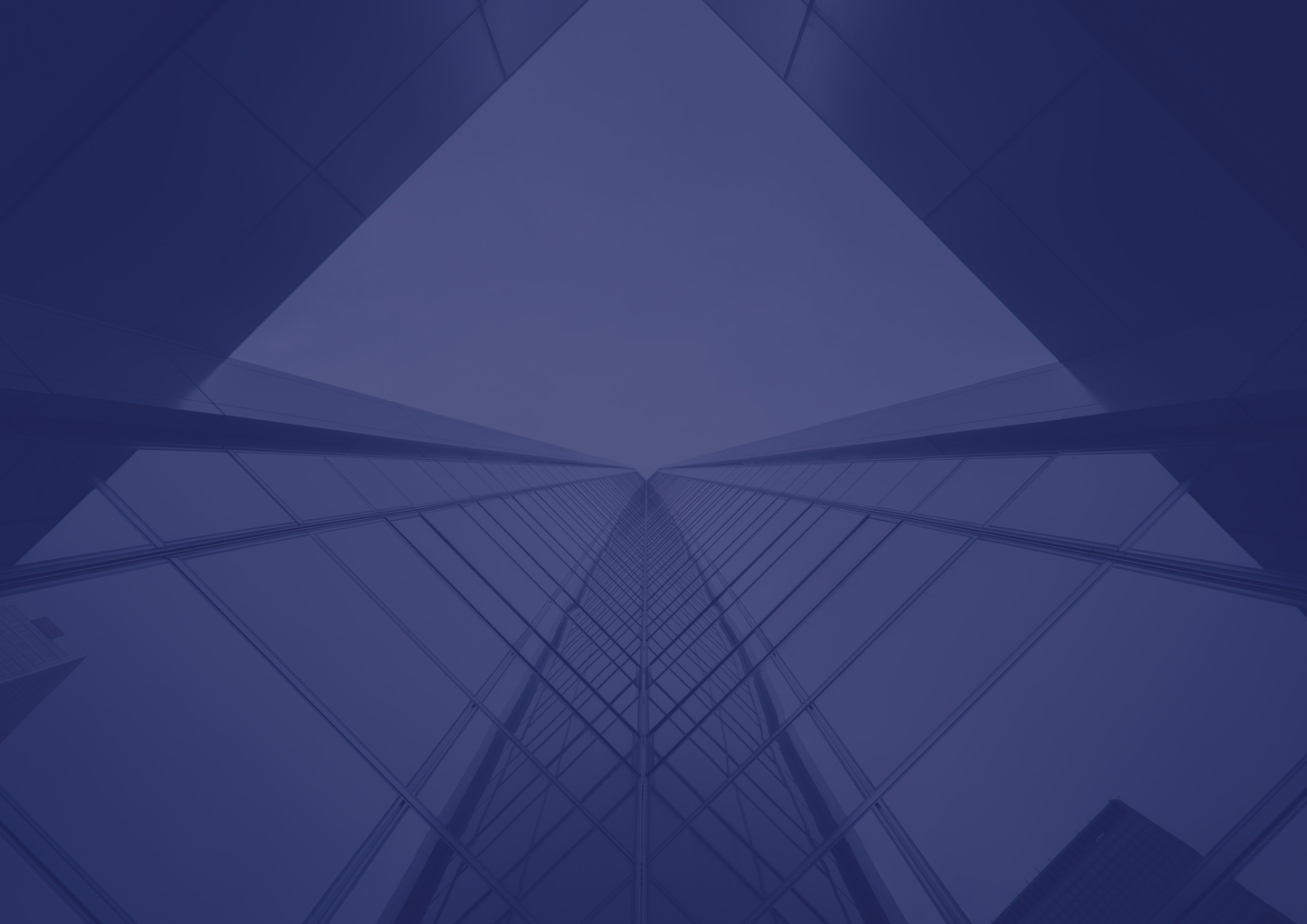
FAX **+264 886 1848**

EMAIL **info@shamrockinvestment.com.na**
WEBSITE **www.shamrock-investment.com**

ESTABLISHED **2014**

STATUS **CLOSE CORPORATION**
COMPANY REG NR **cc/2014/4142**

OPERATIONAL AREA **REGIONAL AND
NATIONAL (NAMIBIA)**



Shamrock
Investment

